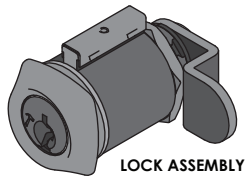
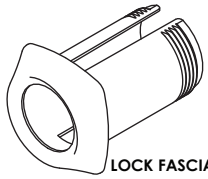


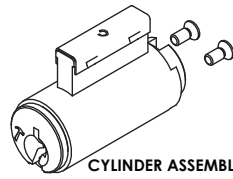
C4 PIN TUMBLER CAM LOCK INSTALLATION INSTRUCTIONS



LOCK ASSEMBLY



LOCK FASCIA



CYLINDER ASSEMBLY



SPACER



PIN CHAMBER SPACER



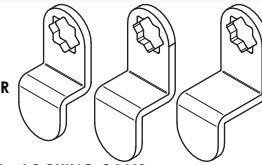
FIXING NUT



SPRING WASHER



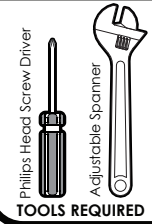
FIXING SCREW



LOCKING CAMS



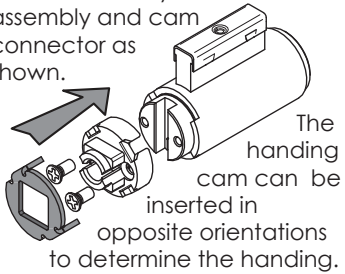
KEYS



TOOLS REQUIRED

DETERMINE HANDING OF CAM LOCK **FIXING INSTRUCTIONS**

Assemble the cylinder assembly and cam connector as shown.



The handing cam can be inserted in opposite orientations to determine the handing.

When looking at the back:



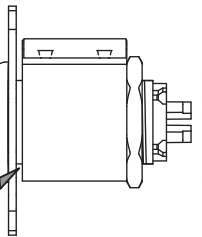
Having the handing cam in this orientation will mean the key turns anti-clockwise to unlock



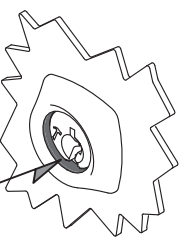
Having the handing cam in this orientation will mean the key turns clockwise to unlock.

WHEN TO USE THE SPACER

If there is still a gap here after the fixing nut has been tightened fully, use the spacer.



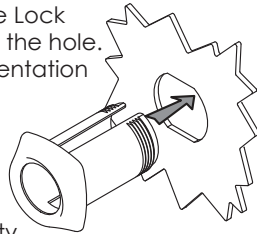
If the cylinder plug face is sitting below the surface of the fascia, the door is too thick, or the spacer needs to be removed.



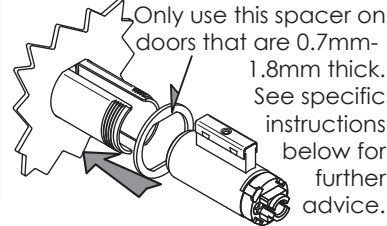
NOTE: The spacer only needs to be used on 0.7mm to 1.8mm thick doors. Anything between 1.8mm and 3.0mm does not need the spacer.

IMPORTANT NOTE: THIS LOCK HAS BEEN DESIGNED TO ONLY WORK ON DOORS THAT ARE 0.7mm - 3.0mm THICK. USE OUTSIDE THIS RANGE IS NOT RECOMMENDED

1. Insert the Lock Fascia into the hole. NB: The orientation of the lock (horizontal or vertical) will not effect the functionality.

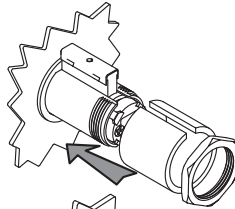


2. Insert cylinder and if required also the spacer.

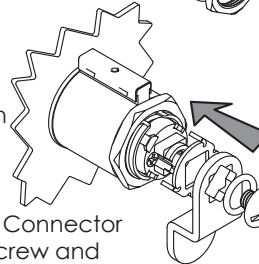


Only use this spacer on doors that are 0.7mm-1.8mm thick. See specific instructions below for further advice.

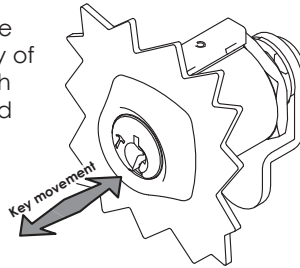
3. Slide the Pin Chamber Spacer into place. Secure and tighten the fixing nut with a spanner.



4. Locate the Handing Cam as required on the Cam Connector. Then select a Locking Cam to suit the application and fix it to the Cam Connector with the Fixing Screw and Spring Washer as shown. Carefully tighten the assembly with a screwdriver. Make sure the orientation of the Locking Cam suits the necessary locking position.



5. Check the functionality of the lock with the keys and adjust if necessary.

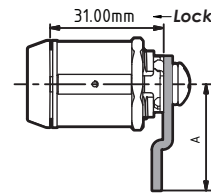


NOTE: A different locking cam with alternate dimensions may be required depending on the installation situation. These can be ordered through customer service if necessary.

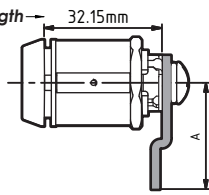
CAM OPTIONS AND DIMENSIONS

NOTE: As shown in the diagrams below, the distance between the outside face of the door and the inside face of the Cam seat varies a small amount depending on thickness of the door upon which it is mounted. Please use the chart and drawings to determine what Cam is required. Three different Cam's are supplied as standard. When using **BENT CAMS** - Subtract **Bend (B)** from **Lock length** to determine fitting size.

0.7-1.8mm thick doors



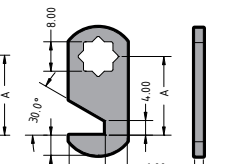
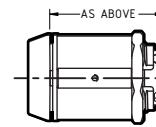
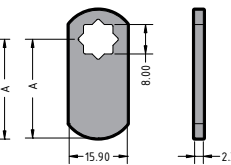
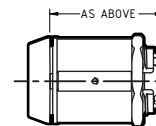
1.8-3.0mm thick doors



BENT CAMS

Model No	Length (A)	Bend (B)
CM2X37	37mm	2mm
CM3X29	29mm	3mm
CM3X39	39mm	3mm
CM3X41	41mm	3mm
CM5X25	25mm	5mm
CM5X33	33mm	5mm
CM5X50	50mm	5mm
CM6X31	31mm	6mm
CM6X37	37mm	6mm
CM7X47	47mm	7mm
CM8X33	33mm	8mm
CM8X40	40mm	8mm
CM8X52	52mm	8mm
CM9X28	28mm	9mm
CM9X42	42mm	9mm
CM11X33	33mm	11mm
CM11X39	39mm	11mm
CM11X46	46mm	11mm
CM12X31	31mm	12mm
CM12X33	33mm	12mm
CM13X47	47mm	13mm
CM15X38	38mm	15mm
CM16X31	31mm	16mm
CM16X38	38mm	16mm

NB: Highlighted Cam's are supplied with lock.



STRAIGHT CAMS

Model No	Length (A)	Model No	Length (A)
CM18MM	18mm	CM38MM	38mm
CM20MM	20mm	CM40MM	40mm
CM25MM	25mm	CM45MM	45mm
CM27MM	27mm	CM50MM	50mm
CM30MM	30mm	CM55MM	55mm
CM33MM	33mm	CM58MM	58mm
CM35MM	35mm	CM60MM	60mm

NOTCHED CAMS

Model No	Length (A)	Model No	Length (A)
CM20N	20mm	CM40N	40mm
CM24N	24mm	CM46N	46mm
CM27N	27mm	CM50N	50mm
CM30N	30mm	CM52N	52mm
CM33N	33mm	CM55N	55mm
CM36N	36mm		

WARNING

Please keep contents away from small children. Suffocation Hazard.

NOTE

Please dispose of plastic bags and other packaging in a thoughtful manner



LOCK & KEY Phone: 1300 652 692 Web: www.locknkey.com.au Web: www.daveweb.com.au

Distributed in Australia by LOCK AND KEY a division on the DAVCOR GROUP PTY LTD ABN 95 003 562 598 This product has been manufactured in Taiwan to Lock and Key Company specifications

This product is guaranteed to be free from defects in materials and workmanship for a period of one (1) year from the date of original purchase. This warranty is for replacement of product only and Lock and Key Company does not accept responsibility for any direct or consequential damage caused by this product or its use. This warranty

does not cover damage that results from faulty installation or usage, alteration or modification of the product or tarnishing of the finish including colour change due to weather, salt or chemical. Should this product not perform satisfactorily in its intended application, return it to place of purchase for replacement.