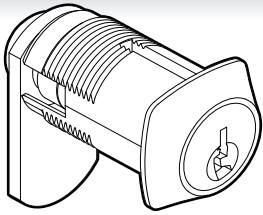
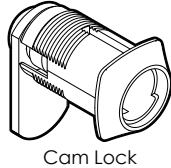


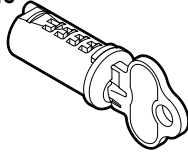
C4 WAFER CAM LOCK INSTALLATION INSTRUCTIONS



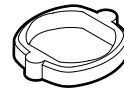
PACKAGED COMPONENTS



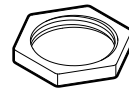
Cam Lock



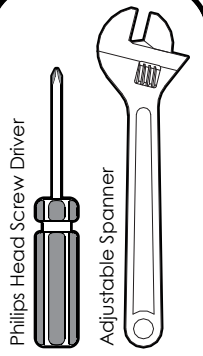
C4 Wafer Cylinder



Sleeve x 3



Fixing Nut

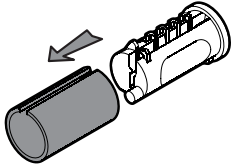


TOOLS REQUIRED

PREPARING THE BARREL

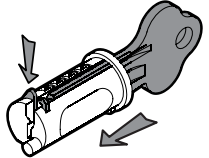
1. REMOVE THE SLEEVE

Hold down the wafers when removing the sleeve.



2. INSERT THE KEY

Insert the key & press the retaining wafer downwards.



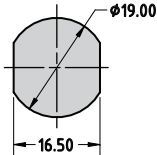
NOTE:

The key will hold the retaining wafer downwards.

FIXING INSTRUCTIONS

NOTE:

You may need to use a different cam depending on installation. (See Overleaf)

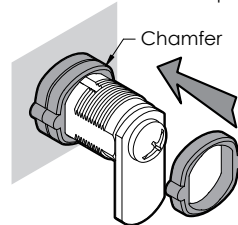


1. INSERT THE CAM LOCK

Insert the cam lock with appropriate cam into the hole.

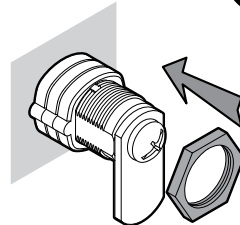
2. INSTALL SLEEVES

Slide the sleeves over the cam lock body. Be sure that the chamfer is on the top.



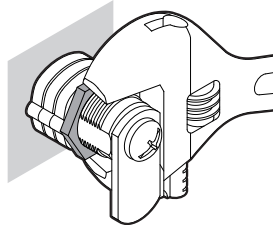
3. INSTALL THE FIXING NUT

Slide the rear fixing nut over the cam lock body.



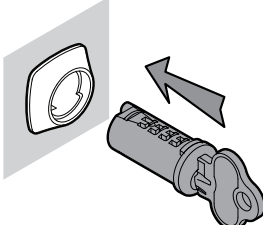
4. TIGHTEN THE FIXING NUT

With a spanner, tighten the rear fixing nut.



5. INSERT THE C4 WAFER BARREL

Insert the C4 wafer barrel. Once installed, hold the barrel & remove the key.



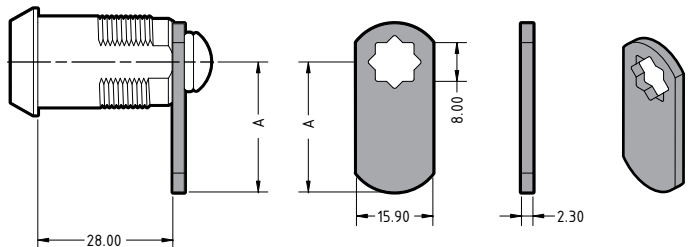
6. CHECK THE CAM LOCK

Once the C4 barrel has been installed, check the operation of the cam lock. The cam lock is now ready for use.



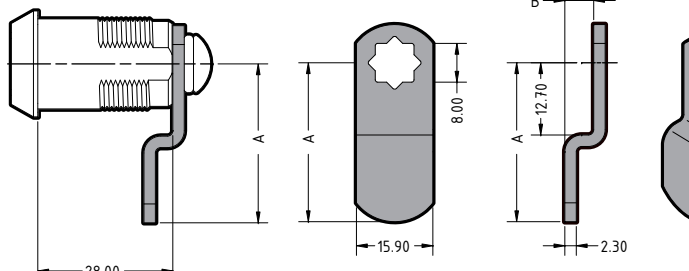
7. BARREL REMOVAL

To remove the barrel from the cam lock, press in the retaining wafer from the bottom, then insert the key. The key will hold the retaining wafer & the barrel is ready for removal.



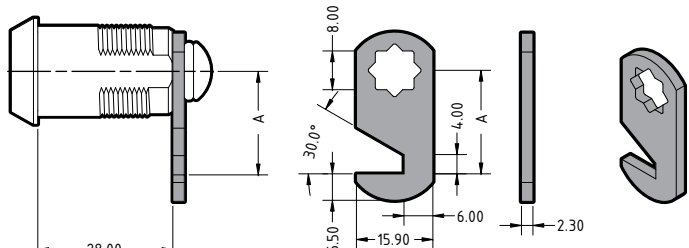
STRAIGHT CAMS

Model No	Length (A)	Model No	Length (A)
CM18MM	18mm	CM38MM	38mm
CM20MM	20mm	CM40MM	40mm
CM25MM	25mm	CM45MM	45mm
CM27MM	27mm	CM50MM	50mm
CM30MM	30mm	CM55MM	55mm
CM33MM	33mm	CM58MM	58mm
CM35MM	35mm	CM60MM	60mm



BENT CAMS

Model No	Length (A)	Bend (B)	Model No	Length (A)	Bend (B)
CM2X37	37mm	2mm	CM8X52	52mm	8mm
CM3X29	29mm	3mm	CM9X28	28mm	9mm
CM3X39	39mm	3mm	CM9X42	42mm	9mm
CM3X41	41mm	3mm	CM11X33	33mm	11mm
CM5X25	25mm	5mm	CM11X39	39mm	11mm
CM5X33	33mm	5mm	CM11X46	46mm	11mm
CM5X50	50mm	5mm	CM12X31	31mm	12mm
CM6X31	31mm	6mm	CM12X33	33mm	12mm
CM6X37	37mm	6mm	CM13X47	47mm	13mm
CM7X47	47mm	7mm	CM15X38	38mm	15mm
CM8X33	33mm	8mm	CM16X31	31mm	16mm
CM8X40	40mm	8mm	CM16X38	38mm	16mm



NOTCHED CAMS

Model No	Length (A)	Model No	Length (A)
CM20N	20mm	CM40N	40mm
CM24N	24mm	CM46N	46mm
CM27N	27mm	CM50N	50mm
CM30N	30mm	CM52N	52mm
CM33N	33mm	CM55N	55mm
CM36N	36mm		



LOCK & KEY Phone: 1300 652 692 Web: www.locknkey.com.au Web: www.daveweb.com.au

Distributed in Australia by LOCK AND KEY a division on the DAVCOR GROUP PTY LTD ABN 95 003 562 598 This product has been manufactured in Taiwan to Lock and Key Company specifications

This product is guaranteed to be free from defects in materials and workmanship for a period of one (1) year from the date of original purchase. This warranty is for replacement of product only and Lock and Key Company does not accept responsibility for any direct or consequential damage caused by this product or its use. This warranty does not cover damage

that results from faulty installation or usage, alteration or modification of the product or tarnishing of the finish including colour change due to weather, salt or chemical. Should this product not perform satisfactorily in its intended application, return it to place of purchase for replacement.

