



G70 INSTALLATION INSTRUCTIONS

IMPORTANT NOTES

To comply with the regulations & provide adequate security, this lock must:

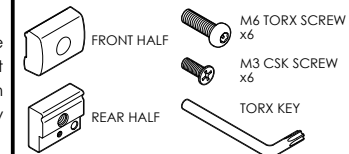
- Be installed on a sliding aluminium window
- Be checked every 4 weeks to ensure the screw is tightly secured
- Be installed at the correct distance to restrict the window opening (per the excerpt of regulations)
- Have the Torx key removed at all times and placed out of reach of children

AUSTRALIAN BCA Regulations Excerpt :

D2.24 Protection of Openable Windows

The openable portion of the window must be protected with a device to restrict the window opening. The device or screen must not permit a 125 mm sphere to pass through the window opening and resist an outward horizontal action of 250 N against the window restrained by the device

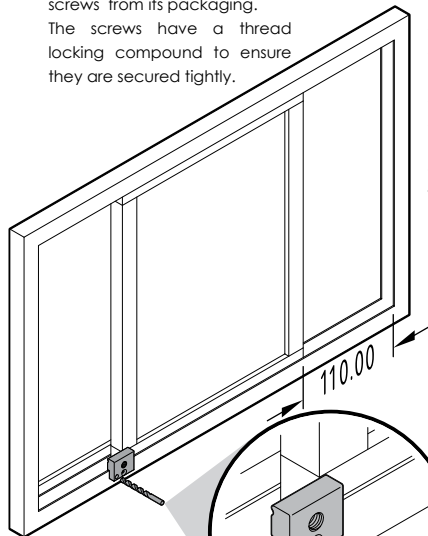
PARTS LIST



AUS

1. Remove the window lock & screws from its packaging.

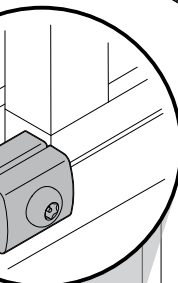
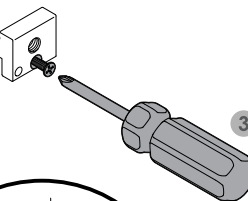
The screws have a thread locking compound to ensure they are secured tightly.



NOTE:
The rear half of the window lock is also used as a drilling guide.

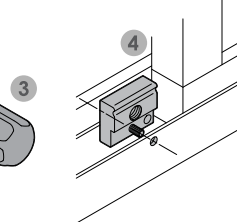
2

2. To install the G70 window lock slide the window open to allow an opening of 110mm. Place the rear half of the window lock onto the window frame and mark the desired location of the hole through the Ø3.5mm hole. Then drill a hole with a Ø3.5mm drill bit.



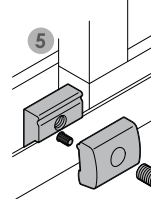
NOTE:
Please ensure there is a minimum of 2.5mm of material between the hole & the edge of the window frame for the product to work effectively.

3. Install the M3 screw onto the rear half.



4

4. Position the rear half onto the window frame and make sure the M3 screw is located in the Ø3.5mm hole.

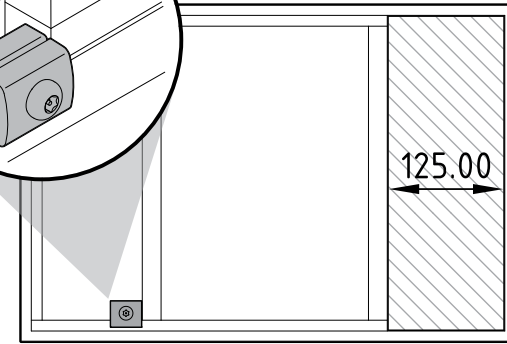


5



5. With the rear half in its position, install the front half of the window lock & secure tightly with the M6 screw.

NOTE:
Test the strength of the installation by pushing the window frame against the G70. To provide adequate security, this lock must be checked every 4 weeks to ensure the screw is tightly secured.



CARBINE

The Next Generation in Locking

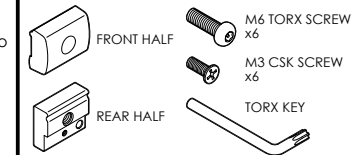
**G70 INSTALLATION INSTRUCTIONS****IMPORTANT NOTES**

To comply with the regulations & provide adequate security, this lock must:

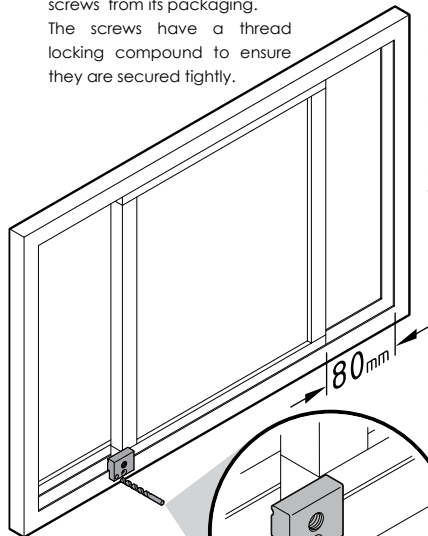
- Be installed on a sliding aluminium window
- Be checked every 4 weeks to ensure the screw is tightly secured
- Be installed at the correct distance to restrict the window opening (per the excerpt of regulations)
- Have the Torx key removed at all times and placed out of reach of children

NEW ZEALAND BUILDING CODE CLAUSE F4**SAFETY FROM FALLING**

To conform with clause 2.1.1 section B this product should be fitted so that a 100mm sphere cannot pass through a 100mm opening – therefore the maximum opening should be no greater than 95mm.

PARTS LIST**NZL**

- 1.** Remove the window lock & screws from its packaging. The screws have a thread locking compound to ensure they are secured tightly.

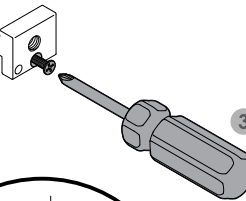


NOTE:
The rear half of the window lock is also used as a drilling guide.

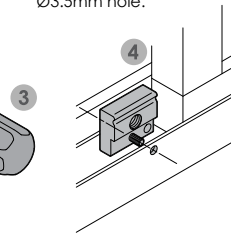
2

- 2.** To install the G70 window lock slide the window open to allow an opening of 80mm. Place the rear half of the window lock onto the window frame and mark the desired location of the hole through the Ø3.5mm hole. Then drill a hole with a Ø3.5mm drill bit.

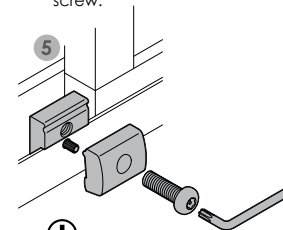
NOTE:
Please ensure there is a minimum of 2.5mm of material between the hole & the edge of the window frame for the product to work effectively.



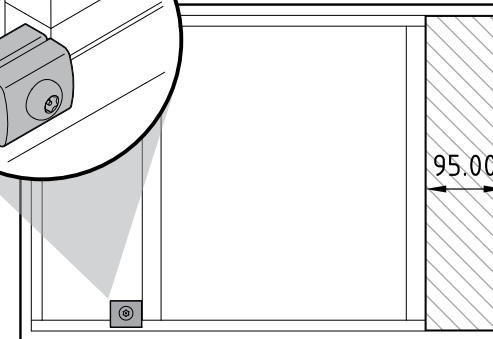
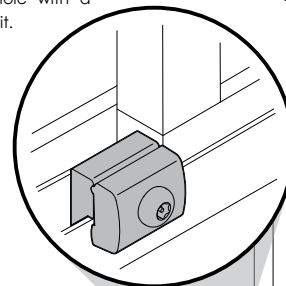
- 3.** Install the M3 screw onto the rear half.



- 4.** Position the rear half onto the window frame and make sure the M3 screw is located in the Ø3.5mm hole.



- 5.** With the rear half in its position, install the front half of the window lock & secure tightly with the M6 screw.



NOTE:
Test the strength of the installation by pushing the window frame against the G70. To provide adequate security, this lock must be checked every 4 weeks to ensure the screw is tightly secured.

Distributed in New Zealand
by Baber Lock & Key LTD
PH:09 368 4802
www.babertocknkey.co.nz